

Introduction to Ireland

Robert C. Newman



Ireland's History

- ◆ Prehistoric
 - To AD 400
- ◆ Early Christian
 - AD 400-800
- ◆ Viking Invasions
 - 800-1170
- ◆ English Rule
 - 1170-1922
- ◆ Irish Freedom
 - Since 1922



Prehistoric Ireland

To AD 400



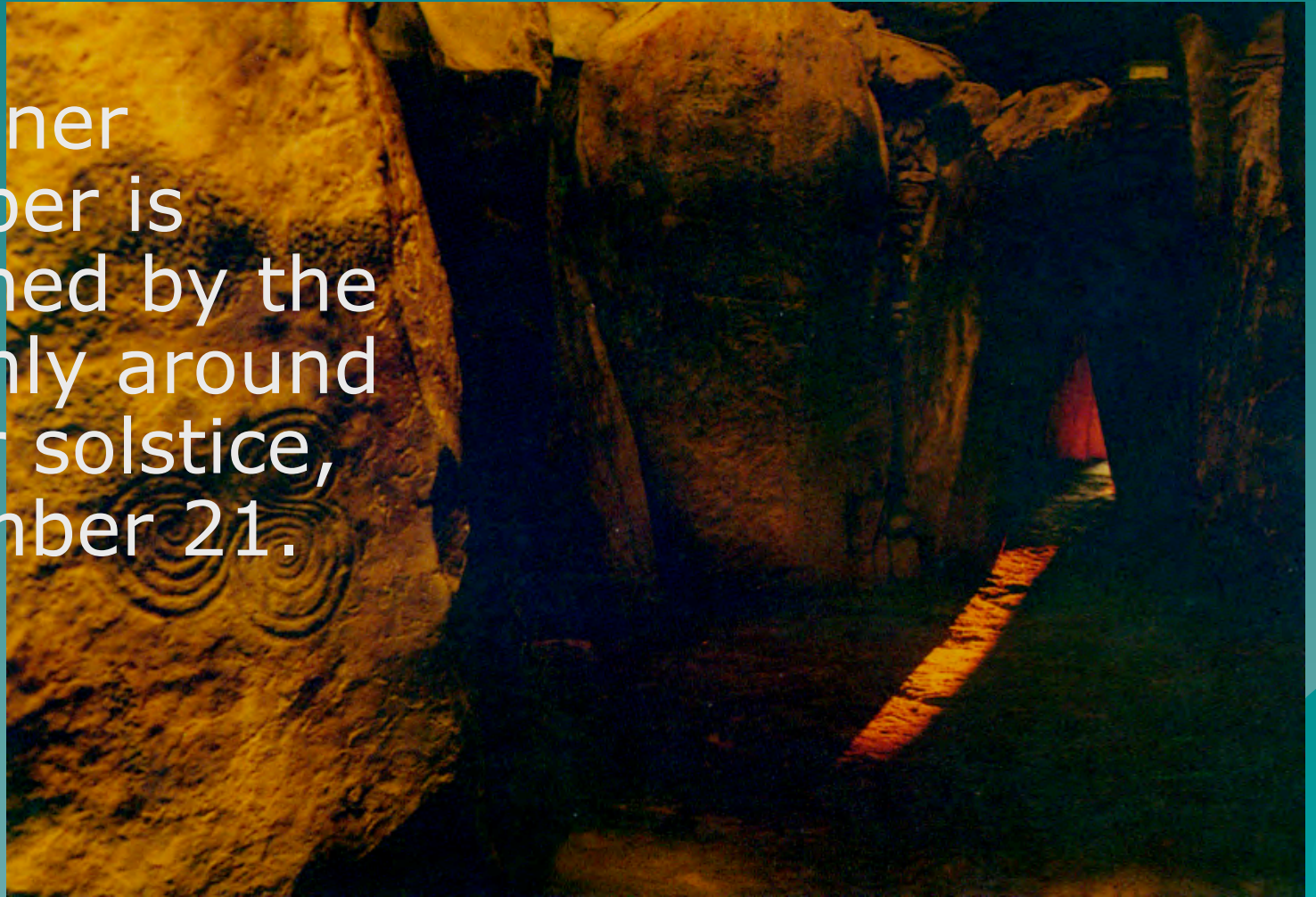
Newgrange

- ◆ A burial mound from ~3000 BC.
- ◆ A passage grave inside a mound some 35 feet high and nearly 300 feet across.
- ◆ The tunnel & inner chamber total about 75 feet long.



Newgrange

The inner chamber is illuminated by the sun only around winter solstice, December 21.



Newgrange

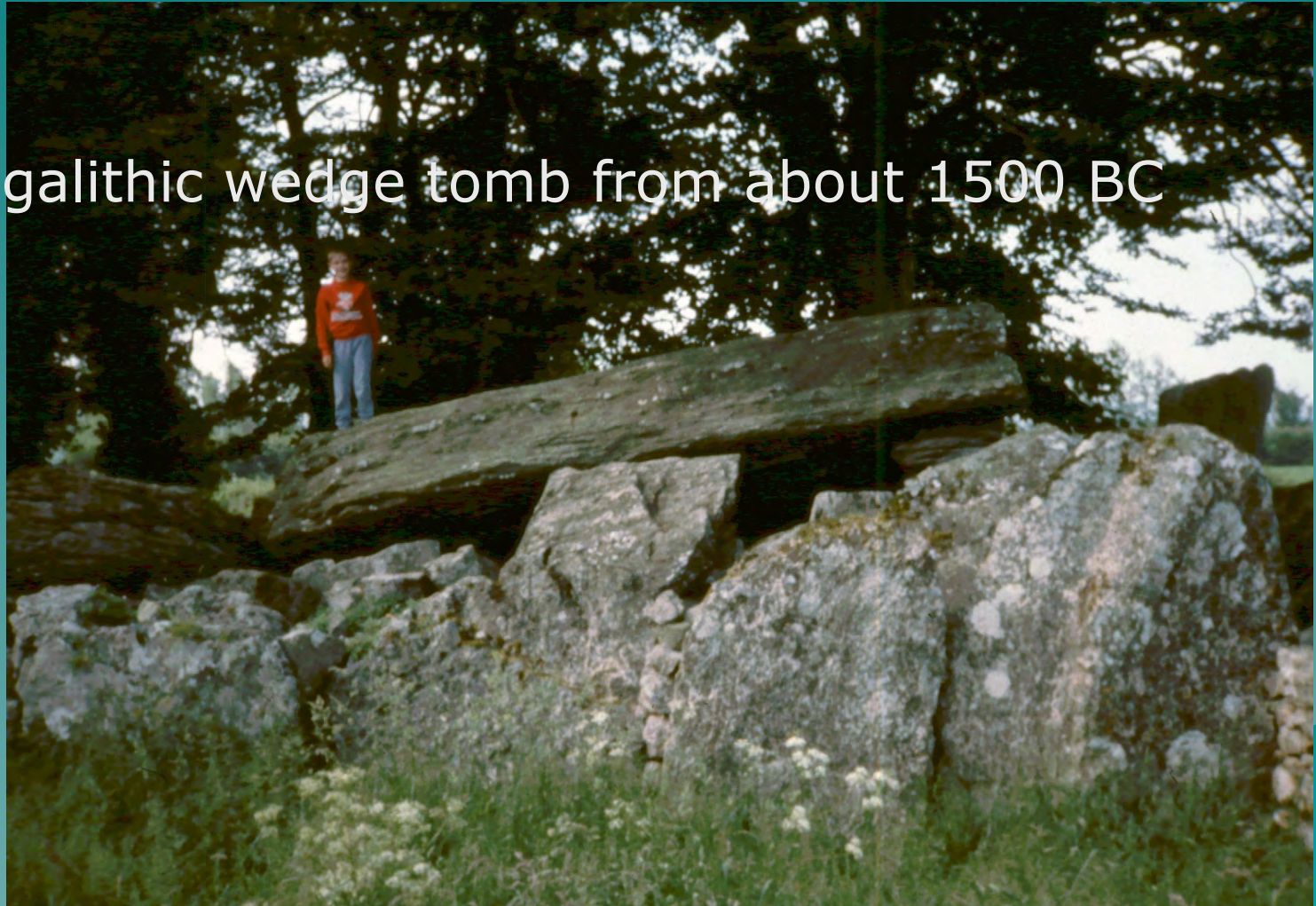


Labbacallee



Labbacallee

A megalithic wedge tomb from about 1500 BC



Early Christian Ireland

AD 400-800



Rock of Cashel



Rock of Cashel

St Patrick was here

One of the stone
crosses goes back to
his time





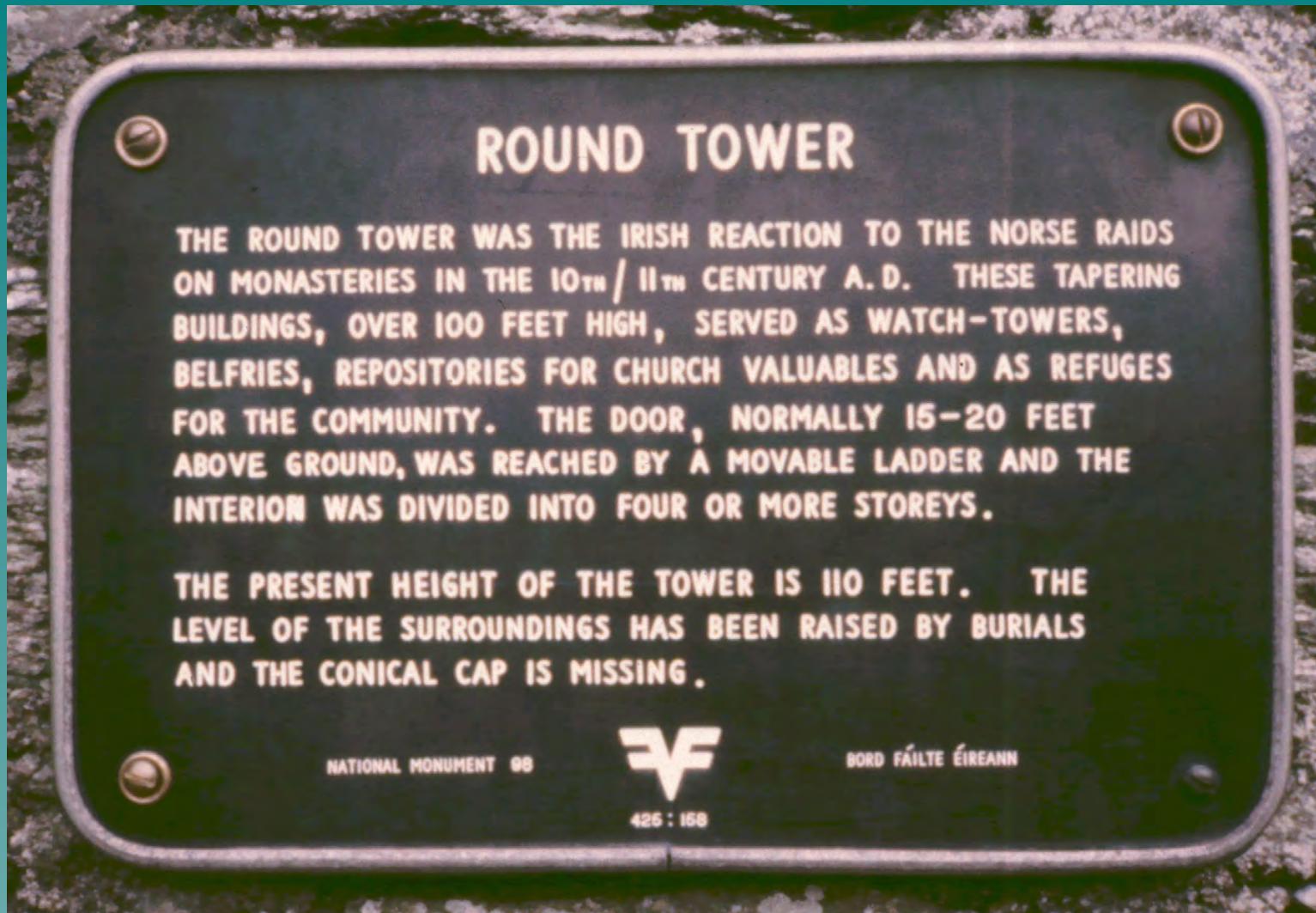
Viking Invasions

Beginning AD 800

Monasterboice



Monasterboice





Under English Rule

1170-1922

Bunratty Castle

- ◆ Built ~1450
- ◆ In the 16th-17th centuries, it was the stronghold of the O'Briens, the Kings (and later Earls) of Thomond.



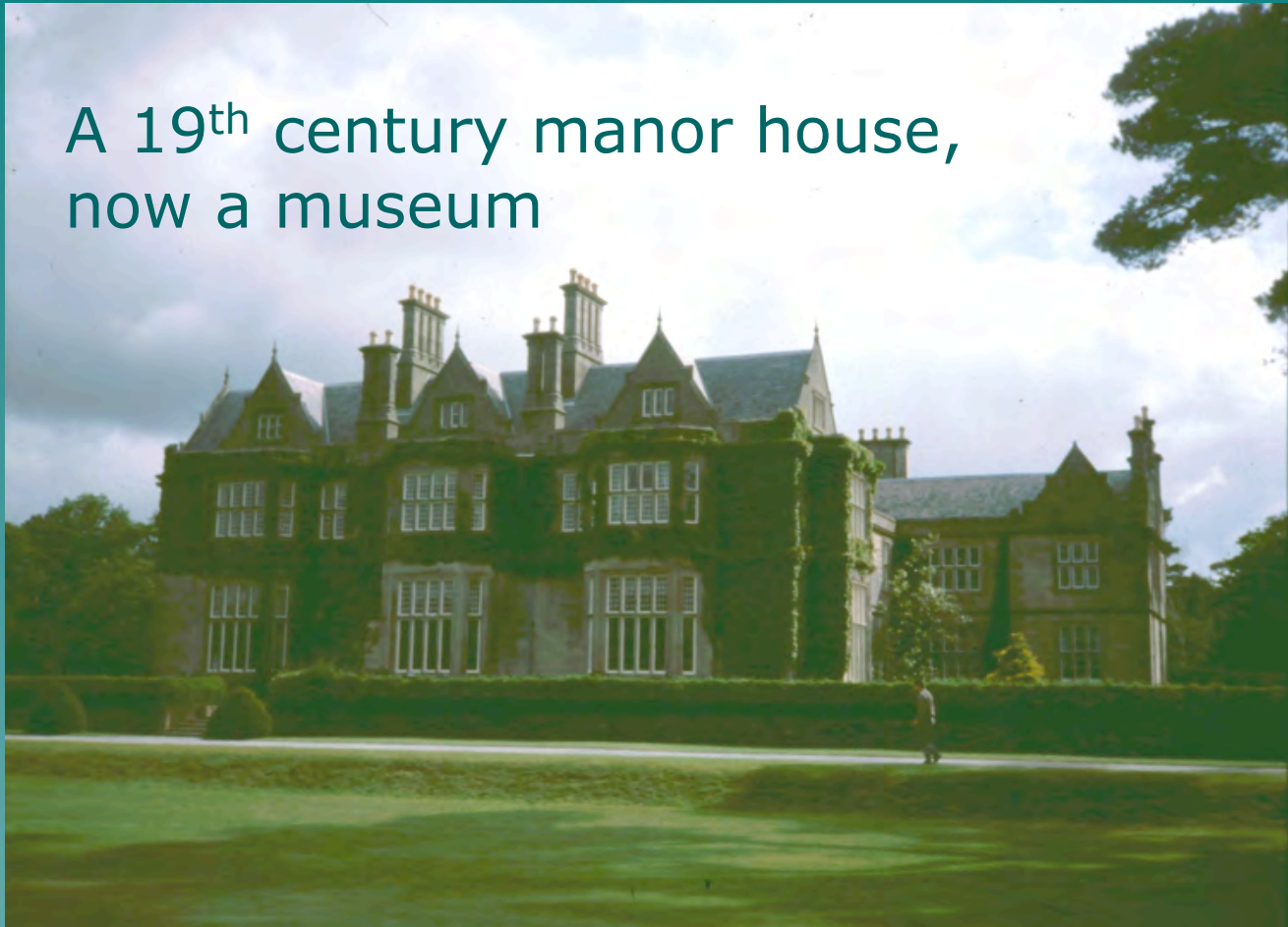
Charles Fort

- ◆ A British fort guarding Kinsale harbor, near Cork.
- ◆ In 1601, Spanish troops landed here to help the Irish in their revolt against England.



Muckross House

A 19th century manor house,
now a museum



An Irish Cottage

A byre dwelling,
both cows &
people together



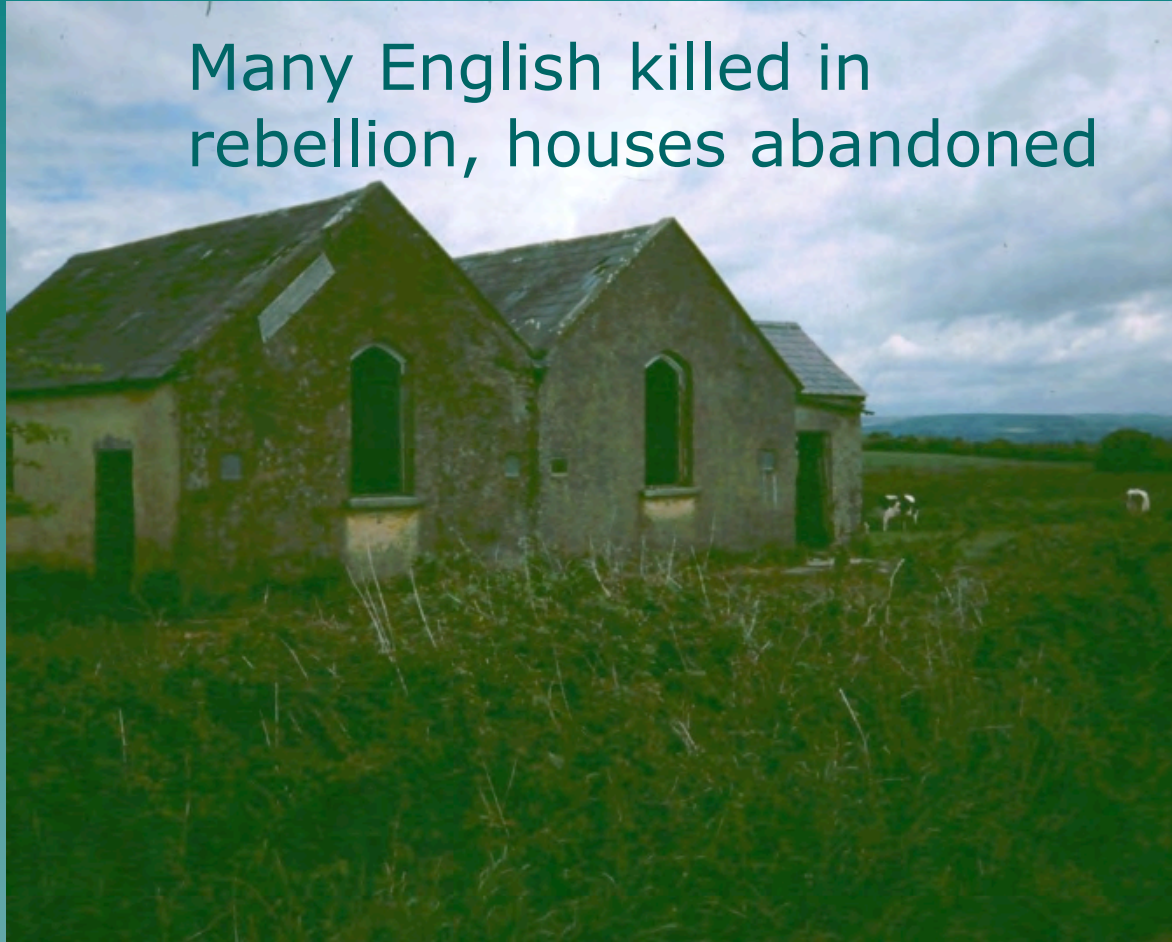


Irish Independence

Since 1922

Abandoned house

Many English killed in
rebellion, houses abandoned



Church of Ireland

**Discredited w/ freedom
now a cultural center**



Irish Climate & Culture



Near the Sea



Near the Sea

- ◆ Anywhere in Ireland you are no more than 40 miles from the sea.
- ◆ This has a significant moderating effect on the climate.
- ◆ So does the warm Gulf Stream.



Mountains



Mountains



Mountains

- ◆ Ireland has beautiful mountains.
- ◆ Typically, the mountains are around the edges of Ireland, and the plains are mostly in the center of the country.



Lakes



Lakes



Lakes

- ◆ Ireland has an abundance of lakes also.
- ◆ The first two of these are near Killarney.
- ◆ This one is near Cork.



Farms



Farms



Farms

- ◆ Farms in Ireland are mostly small, with distinctive stone or hedge field dividers.
- ◆ Due to agricultural policies of the European Union, Irish farmers have done very well.



Livestock

- ◆ Ireland is especially good for grazing, with lush grass everywhere.
- ◆ The main livestock are sheep, goats and cattle.



Livestock



Livestock



Peat Farming

- ◆ Peat is a matted turf that is on its way to forming coal.
- ◆ It is mined & dried in rural areas and used for home & industrial fuel.
- ◆ It makes a fine, sweet-smelling fire.



Rural Cottages

- ◆ This is an example of a typical cottage in the country.
- ◆ This one, near Tralee, was renovated by the Murphys, a missionary couple.



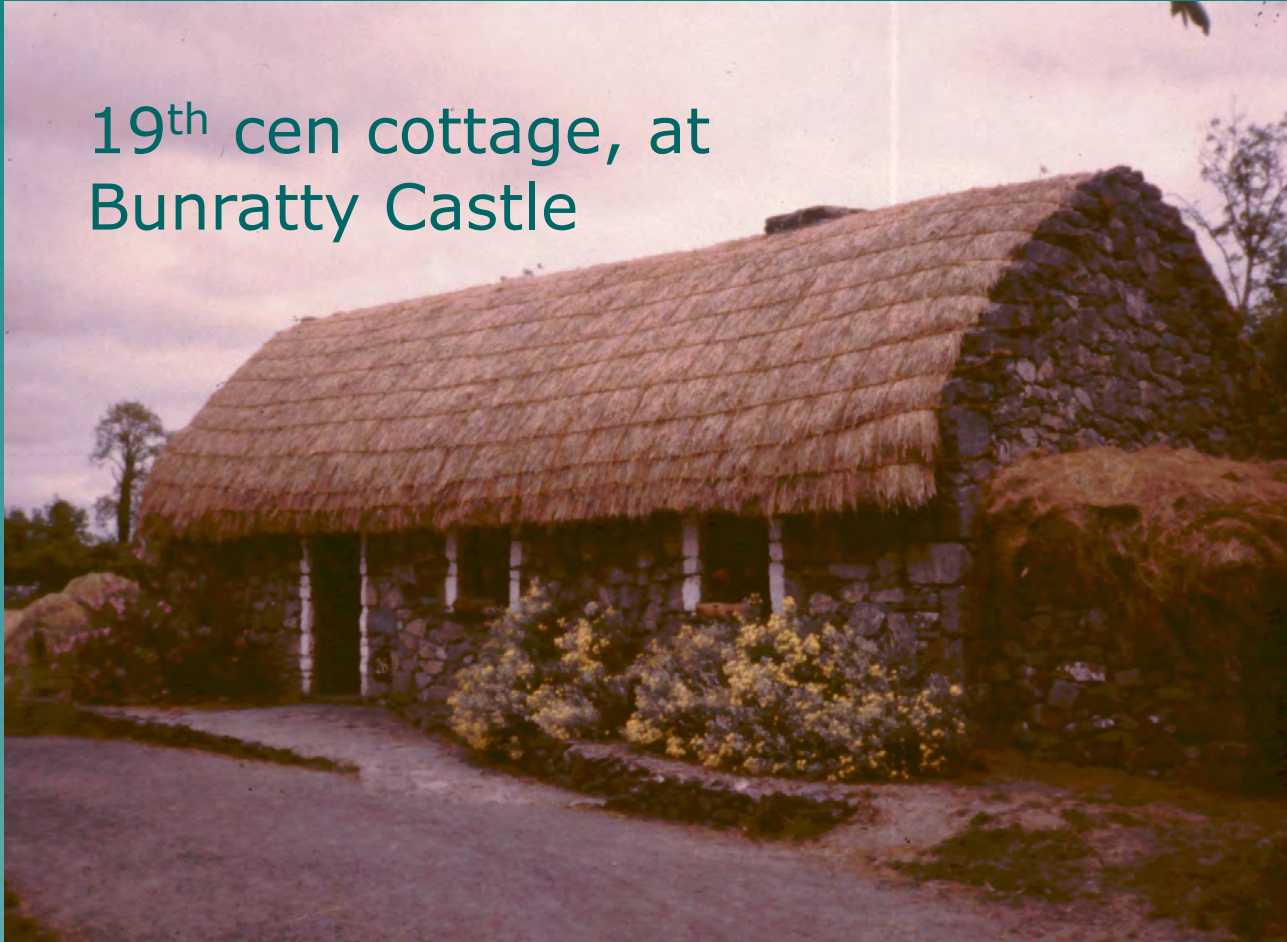
Rural Cottages



Thatched
house, N of
Tralee

Rural Cottages

19th cen cottage, at
Bunratty Castle



Towns

- ◆ Ireland has the lowest population density in Europe.
- ◆ It has many small towns.
- ◆ This is Castleisland in SW Ireland, County Kerry.



Castleisland



City of Cork

- ◆ This is the city of Cork, the 2nd largest in Ireland (Republic of Ireland).
- ◆ At the time of these pictures (1989), its population was about 150,000.



City of Cork



City of Dublin

- ◆ Dublin is Ireland's largest city, with over 1 million people.
- ◆ It is the capital of the Republic of Ireland.



City of Dublin



St. Stephen's
Green

City of Dublin

Trinity College





Churches & Shrines

Shandon Cathedral

Church of
Ireland
(Anglican), Cork



St Margaret's



Marian Shrine, Ballinora



Marian Shrine, Ballinaspittle



Missionaries



BMW Team, Killarney, Tralee

From Left:
John Herrick
Brian Wagner
Bill Doran
Kerry Butram
Tom Murphy



The Wagners, Killarney

From Left:
Unidentified
Brian Wagner
Lori Wagner
Jessie Wagner
John Toome
John's wife
Jeanette
Wagner



The McGanns, UFM, Cork

Bob McGann

Karen

Bobbie

Timmy

Stephen

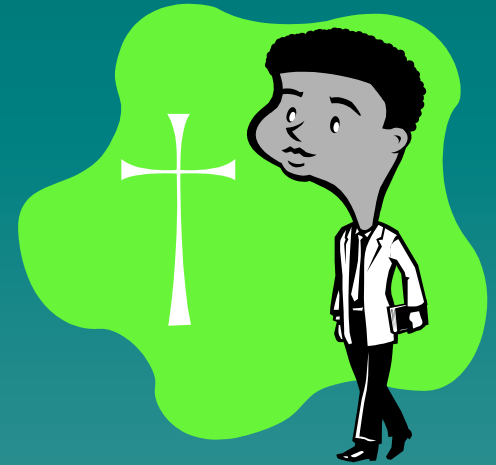
Ashling



UFM Summer Team

Dan Zagone
Jonathan
Thar
With
Bob McGann
& son Bobbie





Irish Believers



Richard Tobin

With Bob
McGann
in front of
The Word
Bookshop



Brendan Walsh

- ◆ Lives in Tralee
- ◆ Disabled
- ◆ Writer



The Moores

- ◆ Live in Ballincollig, near Cork
- ◆ He owns a computer business
- ◆ Tony
- ◆ Heather
- ◆ Ruth
- ◆ Lynn





Speaking Sites

For my June 1989 visit

Ivy Cultural Center

- ◆ Castleisland
- ◆ A former Ch of Ireland church building



St Colm's High School

Private school emphasizing
Irish culture

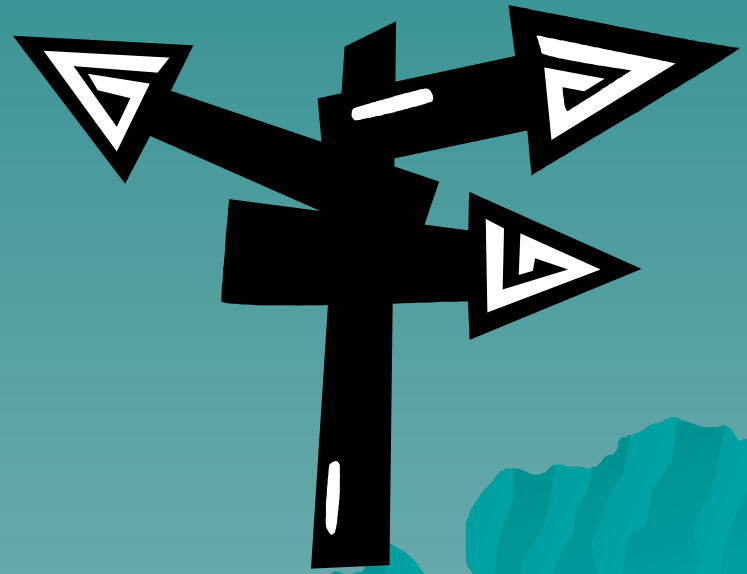


Connolly Hall

- ◆ Labor Union hall
- ◆ In downtown Cork



Which Way, Ireland?



Heavy Metal in Cork



Scripture Sign

Jesus said:
What shall it
profit a man if
he shall gain
the whole
world and lose
his own soul?



Which way?



The End

Pray for Ireland!

